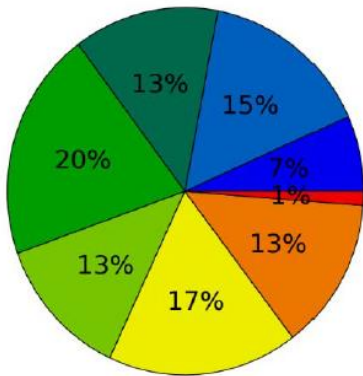
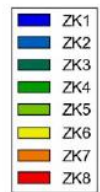
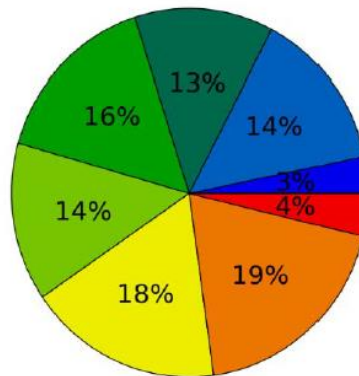


Anlage 11 zur Drucksache VO/0671/19: IST-Zustände je BV

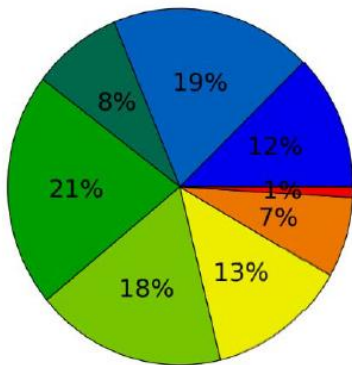
Barmen_ZK8



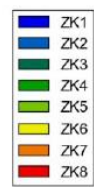
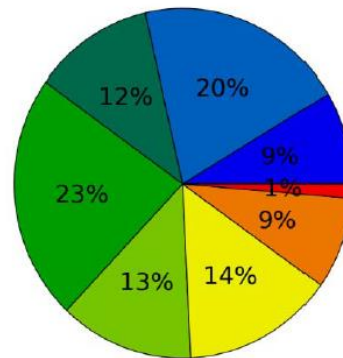
Cronenberg_ZK8



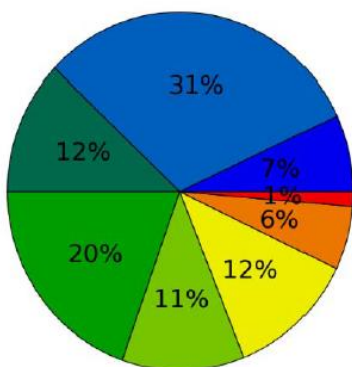
Elberfeld_ZK8



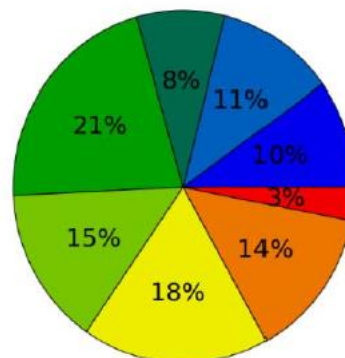
Elberfeld-West_ZK8



Heckinghausen_ZK8

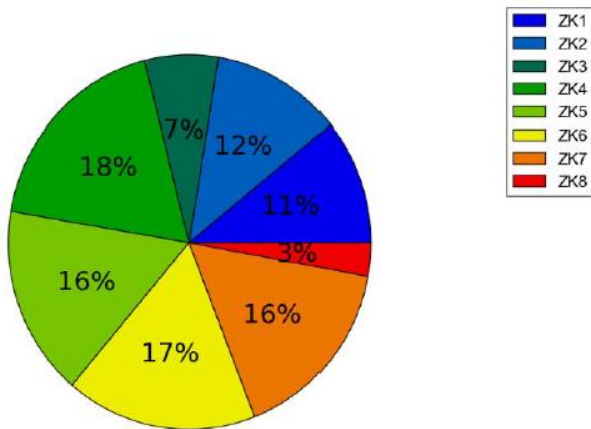


Langerfeld-Beyenburg_ZK8

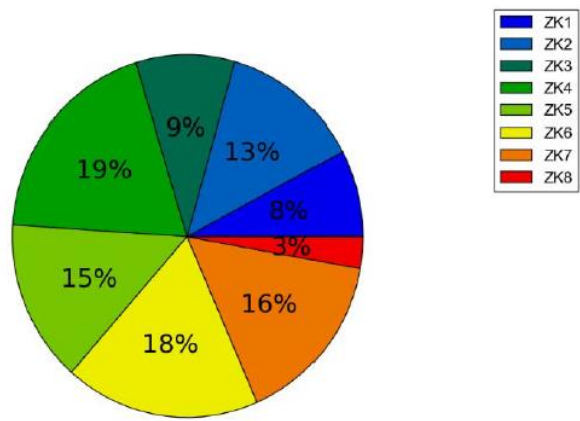


Anlage 11 zur Drucksache VO/0671/19: IST-Zustände je BV

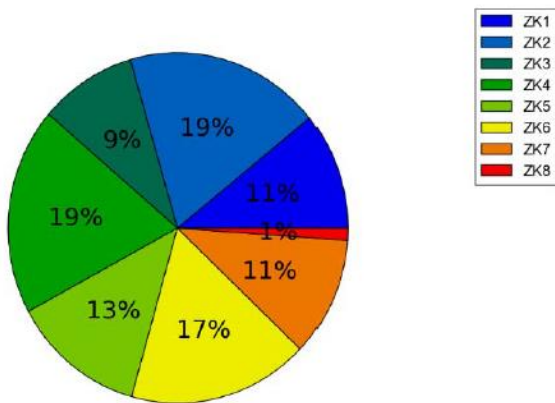
Oberbarmen_ZK8



Ronsdorf_ZK8



Uellendahl-Katernberg_ZK8



Vohwinkel_ZK8

