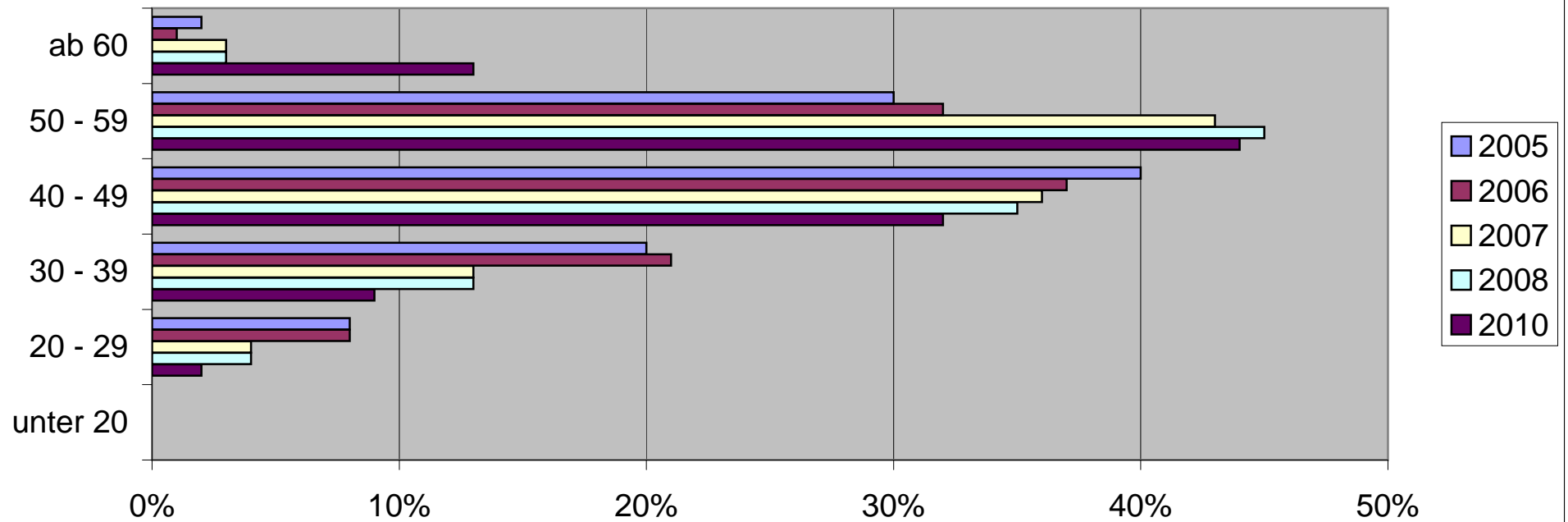


## Altersstruktur R 201 - Entwicklung der Jahre 2005 - 2010



	unter 20	20 - 29	30 - 39	40 - 49	50 - 59	ab 60
2005	0%	8%	20%	40%	30%	2%
2006	0%	8%	21%	37%	32%	1%
2007	0%	4%	13%	36%	43%	3%
2008	0%	4%	13%	35%	45%	3%
2010	0%	2%	9%	32%	44%	13%